

# Upholsteries

## GENERAL WARNINGS

The images are indicative. It is recommended to consult the upholsteries and finishes cards with the actual samples. Slight color and tone variations may result from the production process of the material. Light colors must not be brought into contact with fabrics and clothing treated with unfixed dyes, or with poor dye fastness, in order to avoid stains. Coated fabrics (eco-leather) can be superficially sanitized with solutions of water and 70% ethyl alcohol and commercial disinfectant products ready for use. It is recommended to test the product on a hidden corner of the surface to clean. We focus your attention on special antimicrobial, antibacterial and antifungal treatments which distinguish some of our coatings, that create an effective defensive barrier against bacteria, mites and fungi, combined with exceptional features of practicality and durability over time.

## Planet

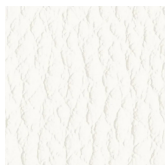
## Cat. A Ecoleather

Fire resistance: UNI 9175 Classe 1IM - EN 1021 - BS 5852 - CA TB117 - M2

Composition: 87,5% PVC - 12,5% Cotton

Weight: 640 g/m2

Abrasion resistance: 100.000 Martindale cycles



A 31F



A 32F



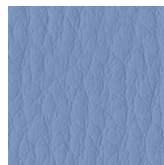
A 29F



A 37F



A 28F



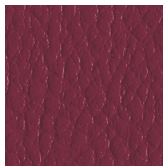
A 30F



A 35F



A 39F



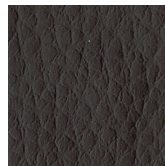
A 36F



A 26F



A 34F



A 38F



A 27F

## 3D Fabric

## Cat. A Polyester fabric

It can be used as backrest mesh on the Key Bold model only and as upholstery on the whole Kastel range

Fire resistance: UNI 9175 Classe 1IM - BS5852

Certifications: OEKO-TEX STANDARD 100

Composition: 100% Polyester

Weight: 360 g/m2

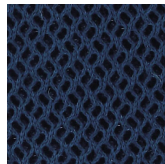
Abrasion resistance: 60.000 Martindale cycles



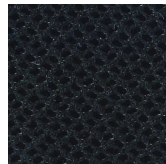
A 3BE



A 3GR



A 3BL



A 3NE

# Upholsteries

## Skill/Secret

Cat. C Ecoleather

Fire resistance: UNI 9175 Classe 1IM - EN 1021 - BS 5852 - CA TB117

Composition: 76% PVC - 2% Polyurethane - 22% PES

Weight: 540 g/m2

Abrasion resistance: 300.000 Martindale cycles



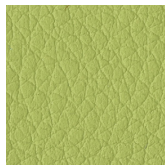
C 40F



C 41F



C 42F



C 46F



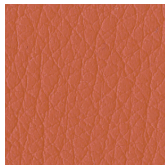
C 50F



C 48F



C 47F



C 43F



C 51F



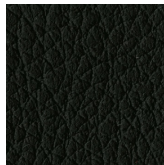
C 53F



C 45F



C 49F



C 52F

## Trevi

Cat. C Fabric

Fire resistance: Classe 1 - UNI 9175 Classe 1IM - M1 - BS 5852 - EN 1021 - CA TB117

Certifications: OEKO-TEX STANDARD 100

Composition: 100% Polyester Trevira CS

Weight: 450 g/m2

Abrasion resistance: 70.000 Martindale cycles



C 38G



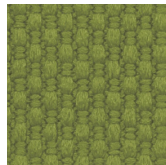
C 38T



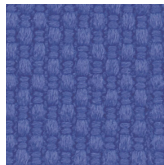
C 381



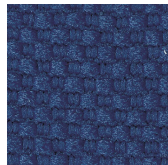
C 38M



C 385



C 383



C -38



C 387



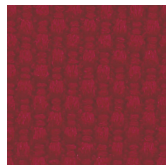
C 38L



C 380



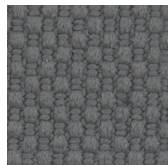
C 382



C 386



C 38P



C 384



C 38A



C 38H



C 388



# Upholsteries

## Cura

Cat. C Fabric

Recycled and recyclable fabric

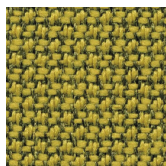
Fire resistance: BS 5852 - CA TB117 - ASTM E 84 Class 1

Certifications: OEKO-TEX STANDARD 100 - EU ECOLABEL

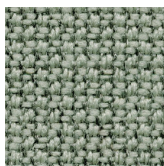
Composition: 100% recycled Polyester

Weight: 300 g/m<sup>2</sup>

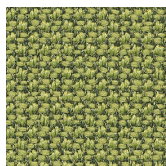
Abrasion resistance: 100.000 Martindale cycles



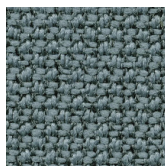
C 31C



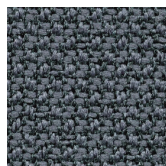
C 30C



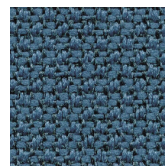
C 39C



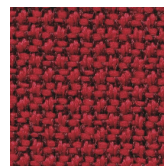
C 32C



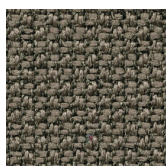
C 34C



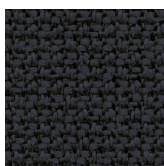
C 36C



C 37C



C 33C



C 38C

## Jet

Cat. C Fabric

Fire resistance: UNI 9175 Classe 1IM - M1 - BS 5852 - EN 1021 - CA TB117 - B1 - BS 7176

Certifications: OEKO-TEX STANDARD 100 - UE ECOLABEL

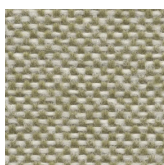
Composition: 100% Polyester Trevira CS

Weight: 260 g/m<sup>2</sup>

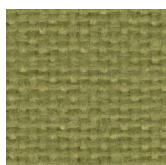
Abrasion resistance: 65.000 Martindale cycles



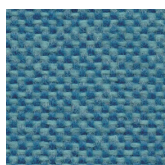
C 37J



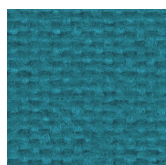
C 30J



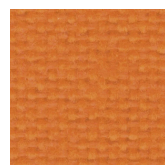
C 34J



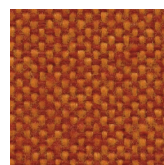
C 32J



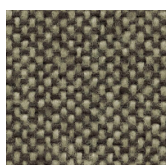
C 36J



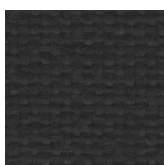
C 35J



C 31J



C 33J



C 38J

## Xtreme

Cat. C Fabric

Fire resistance: UNI 9175 Classe 1IM - EN 1021 - BS 5852 - DIN 4102 B1

Certifications: OEKO-TEX STANDARD 100 - UE ECOLABEL

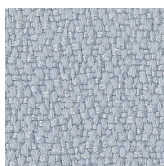
Composition: 100% recycled Polyester

Weight: 310 g/m<sup>2</sup>

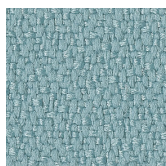
Abrasion resistance: 100.000 Martindale cycles



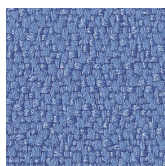
C 335



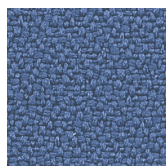
C 349



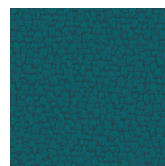
C 333



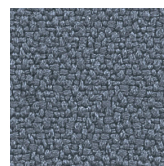
C 338



C 325



C 340



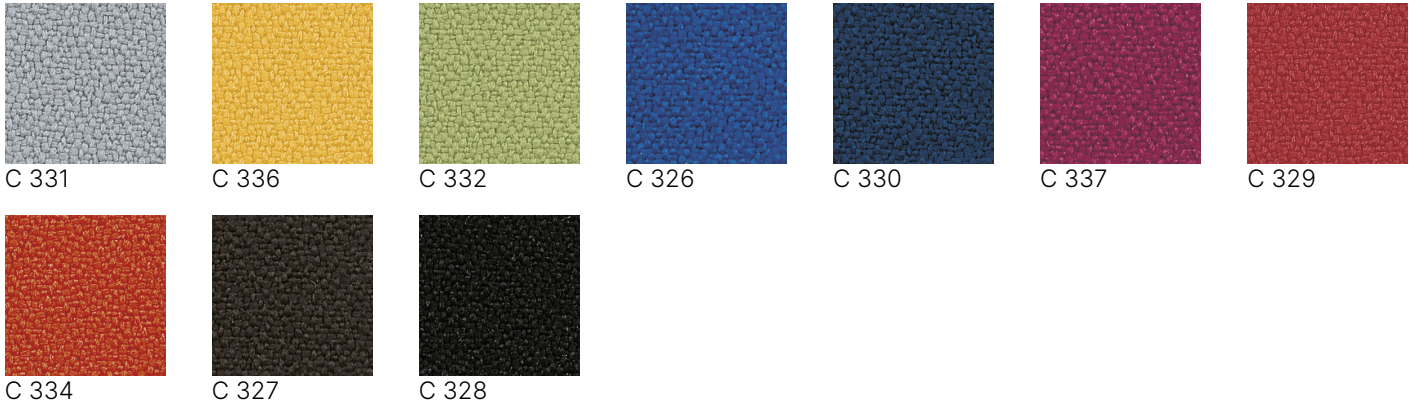
C 324

# Upholsteries

## Mirage

Cat. C Fabric

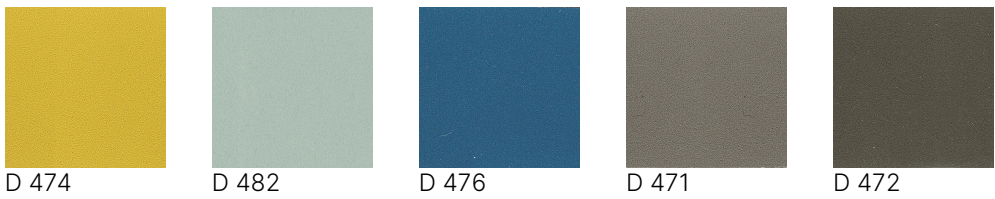
Fire resistance: UNI 9175 Classe 1IM - EN 1021 - BS 5852 - DIN 4102 B1  
Certifications: OEKO-TEX STANDARD 100  
Composition: 100% Polyester Trevira CS  
Weight: 330 g/m2  
Abrasion resistance: 100.000 Martindale cycles



## Extrema Ikon

Cat. D Ecoleather

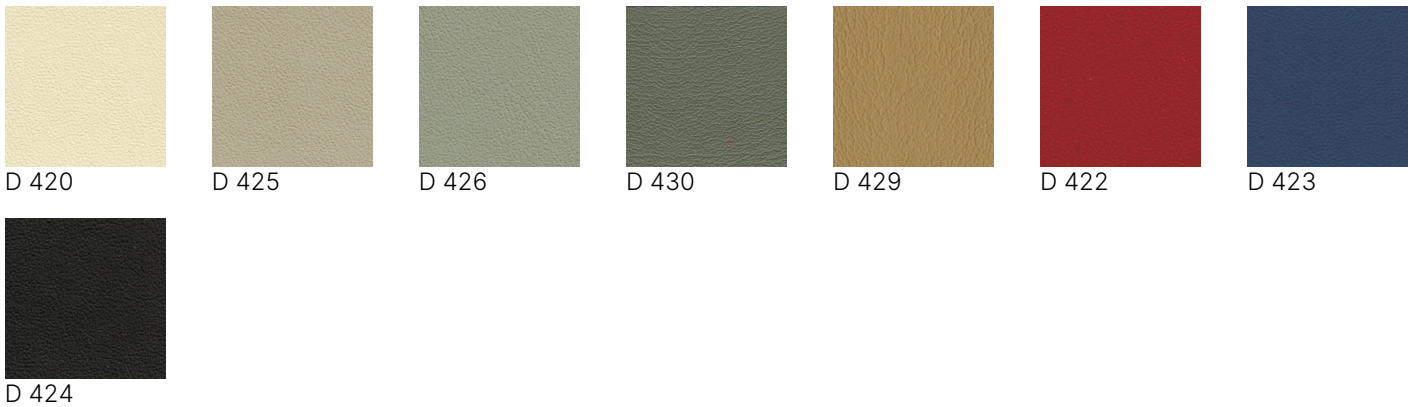
Antimicrobial treatment, waterproof  
Fire resistance: UNI 9175 Classe 1IM - EN 1021 - BS 5852 - CA TB117  
Composition: 63% Polyurethane - 29% Cotton - 8% PES  
Weight: 480 g/m2  
Abrasion resistance: 150.000 Martindale cycles



## Extrema AU

Cat. D Ecoleather

Antimicrobial treatment, waterproof  
Fire resistance: UNI 9175 Classe 1IM - EN 1021 - BS 5852 - CA TB117  
Composition: 63% Polyurethane - 29% Cotton - 8% PES  
Weight: 480 g/m2  
Abrasion resistance: 150.000 Martindale cycles





# Upholsteries

## Poseidon

Cat. D Fabric

Recycled and recyclable fabric

Fire resistance: UNI 9175 Classe 1IM - EN 1021 - BS 5852 - CA TB117

Certifications: OEKO-TEX STANDARD 100

Composition: 100% recycled Polyester Seaqual

Weight: 500 g/m2

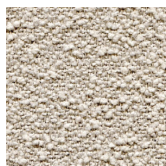
Abrasion resistance: 100.000 Martindale cycles



D 40P



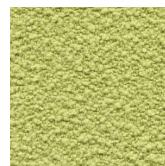
D 49P



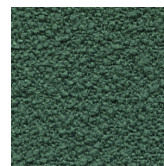
D 45P



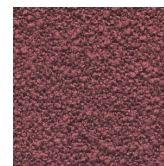
D 46P



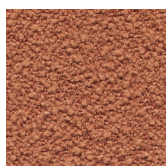
D 43P



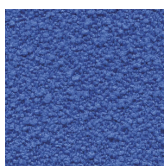
D 44P



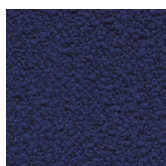
D 42P



D 41P



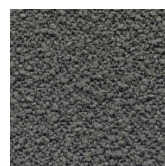
D 47P



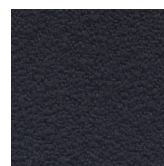
D 48P



D 51P



D 50P



D 52P

## Cyber

Cat. D Fabric

Recycled and recyclable fabric

Fire resistance: BS EN 1021 - CA TB117

Certifications: OEKO-TEX STANDARD 100 - UE ECOLABEL

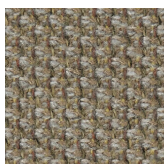
Composition: 100% recycled Polyester

Weight: 407 g/m2

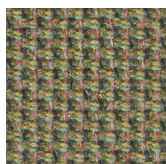
Abrasion resistance: 120.000 Martindale cycles



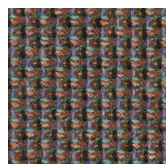
D 41Y



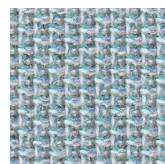
D 42Y



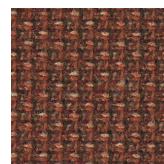
D 40Y



D 43Y



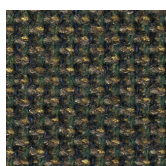
D 44Y



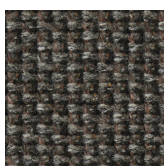
D 45Y



D 46Y



D 47Y



D 48Y

## Tweed Coco

Cat. D Fabric

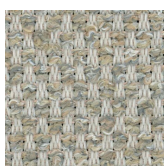
Fire resistance: UNI 9175 Classe 1IM - EN 1021 - BS 5852 - CA TB117 Certifications: OEKO-TEX

STANDARD 100 Composition: 52% PES FR, 48% PET FR Weight: 467 g/m2 Abrasion resistance:

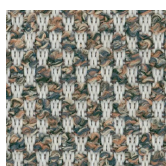
50.000 Martindale cycles



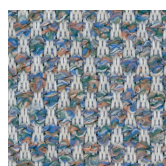
D 40W



D 41W



D 42W



D 43W



D 44W



# Upholsteries

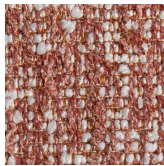
## Honey

Cat. D Fabric

Fireproof on request only Certifications: OEKO-TEX STANDARD 100 Composition: 100% PES Weight: 550 g/m2 Abrasion resistance: 70.000 Martindale cycles



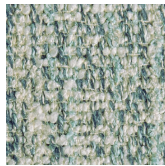
D 40H



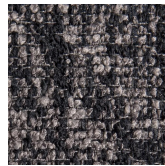
D 41H



D 42H



D 43H

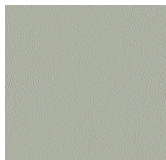


D 44H

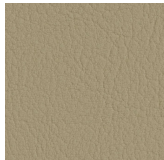
## Valencia

Cat. D Ecoleather

Antibacterial, antimicrobial and antifungal protection, Permablok3, UV resistance, stain resistant  
Fire resistance: UNI 9175 Classe 1IM - EN 1021 - DIN 4102 - NFPA 260 - CA TB117  
Certifications: Greenguard Gold - Carbon Neutral  
Composition: 100% Vinyl  
Weight: 650 g/m2  
Abrasion resistance: 300.000 Martindale cycles



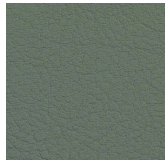
D 54V



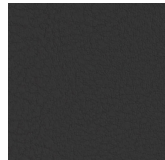
D 50V



D 51V



D 52V



D 53V

## Fenice

Cat. D Fabric

Fire resistance: UNI 9175 Classe 1IM - EN 1021 - BS 5852 - CA TB117  
Certifications: OEKO-TEX STANDARD 100  
Composition: 75% Wool - 25% Polyamide  
Weight: 335 g/m2  
Abrasion resistance: 100.000 Martindale cycles



D 503



D 505



D 504



D 508



D 509

## Jungla

Cat. D Fabric

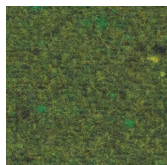
Recycled and recyclable fabric  
Fire resistance: UNI 9175 Classe 1IM - EN 1021 - BS 5852 - CA TB117  
Certifications: OEKO-TEX STANDARD 100  
Composition: 75% Wool - 20% Polyamide - 5% AF  
Weight: 395 g/m2  
Abrasion resistance: 100.000 Martindale cycles



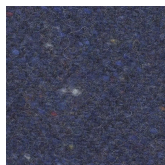
D 510



D 511



D 512



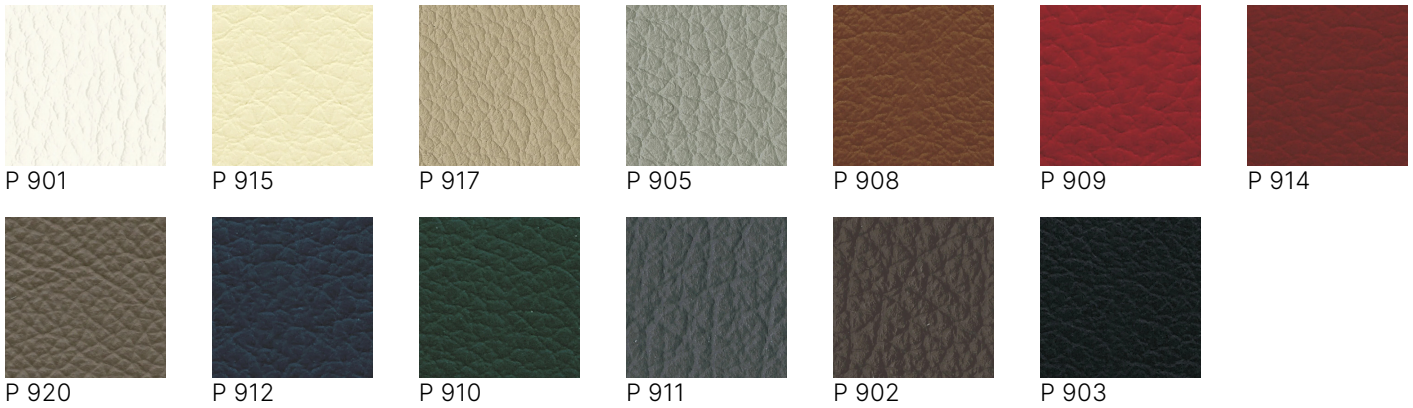
D 513

# Upholsteries

## Pelle

Cat. P Genuine leather

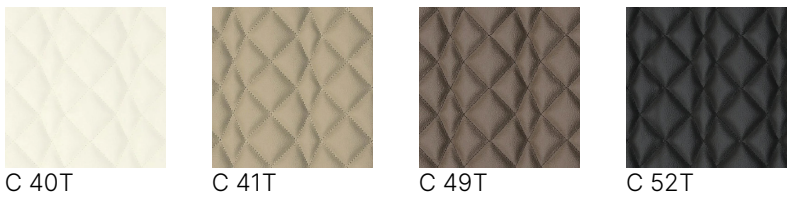
Fire resistance: CA TB117 - BS 5852 - BS EN 1021  
Certifications: Biobased product - Carbon Neutral - Blu Ange  
Composition: European cow genuine leather  
Thickness: 0,8 - 1,0 mm



## Skill Diamond

Ecoleather

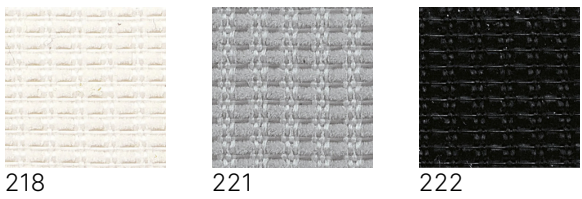
Only for quilted backrest mod. Klint  
Fire resistance: UNI 9175 Classe 1IM - EN 1021  
Composition: 69% P.V.C. - 30% Cotton - 1% Polyurethane  
Abrasion: 50,000 Martindale cycles



## Mesh

Mesh

Only for Kuper, Karma, Korium, Kosmo, Kelly models  
Certifications: OEKO-TEX STANDARD 100  
Composition: 55% Polyester - 45% Polyamide  
Weight: 280 g/m2  
Abrasion: 100.000 Martindale cycles

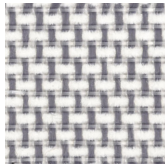


# Upholsteries

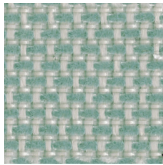
## Shrinx 4902

Mesh

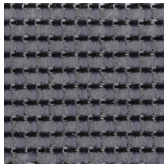
Only for Key Line model  
Fire resistance: EN 1021  
Composition: 70% Polyester - 30% Polyamide  
Weight: 375 g/m2  
Abrasion resistance: 170,000 cycles Martindale



Beige



Verde



Grigio



Nero



# Finishes

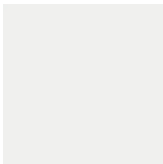
## GENERAL WARNINGS

The images are indicative. It is always recommended to consult the upholsteries and finishes swatch cards with actual samples. Products made with recycled material (PSV – Second Life Plastic) may have slight color variations or surface imperfections which should be considered intrinsic features of the process and a guarantee of the real use of recycled material.

### Kicca

Polypropylene

Shell colours



White  
RAL 9003



Dove-colour  
RAL 1019



Orange  
RAL 2008



Red  
RAL 3020



Brick red  
NCS 3560-Y70R



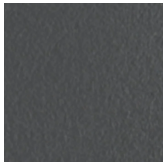
Olive green  
PANTONE 18-0527  
TCX



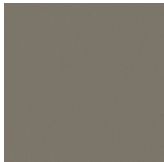
Turquoise  
NCS S 4010-B50G



Ocean blue  
NCS S 7010-B10G



Grey  
RAL 7043



Lava  
PANTONE 405 C

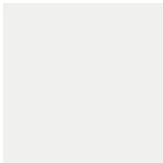


Black

### Kalea

Polypropylene

One colour shell



White  
RAL 9003



Dove-colour  
RAL 1019



Red  
RAL 3020



Brick red  
NCS 3560-Y70R



Green  
RAL 6039



Olive green  
PANTONE 18-0527  
TCX



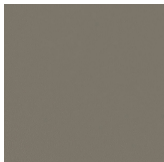
Turquoise  
NCS S 4010-B50G



Ocean blue  
NCS S 7010-B10G



Grey  
RAL 7043



Lava  
PANTONE 405 C



Black

### Kalea

Polypropylene

Two-colour rear backrest (white frontal part)



Dove-colour  
RAL 1019



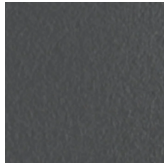
Orange  
RAL 2008



Turquoise  
NCS S 4010-B50G



Blue  
RAL 5022



Grey  
RAL 7043



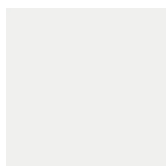
Black

# Finishes

## Kross

Polypropylene

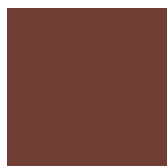
Shell colours



White  
RAL 9003



Dove-colour  
RAL 7032



Red  
RAL 3009



Green  
RAL 6013



Teal  
RAL 5021

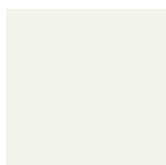


Black

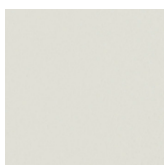
## Kicca One

Reinforced fiber-glass polypropylene

Chair colours



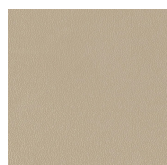
White  
RAL 9010



Light grey  
RAL 9018



Beige  
RAL 7032



Dove-colour  
RAL 1019



Caramel  
RAL 050 50 30



Red  
RAL 3013



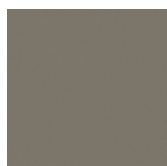
Green  
RAL 1027



Desert sage  
RAL 7003



Turquoise  
NCS S 4010-B50G



Lava  
PANTONE 405 C

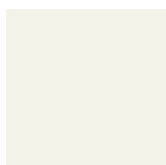


Slate grey  
RAL 7022

## Klia

Reinforced fiber-glass polypropylene

Chair colours



White  
RAL 9010



Dove-colour  
RAL 1019



Yellow  
RAL 1004



Old rose



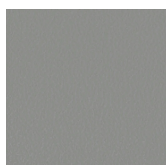
Red  
RAL 3013



Green  
RAL 6011



Turquoise  
NCS S 4010-B50G



Grey  
RAL 7037

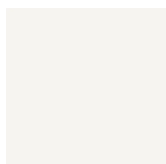


Slate grey  
RAL 7022

## Krizia

Polycarbonate

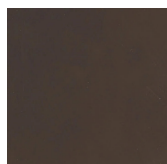
Shell colours



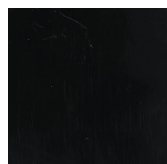
White



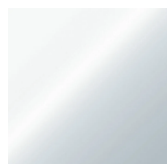
Red  
RAL 3001



Moka  
RAL 8010



Black  
RAL 9017



Transparent

# Finishes

**Koki**

Painted steel

Seat and frame



Brick red  
NCS 3560-Y70R



Olive green  
PANTONE 18-0527 TCX



Lava  
PANTONE 405 C



Black  
RAL 9005

**Klan**

Reinforced fiber-glass polypropylene


Stool colours



White  
RAL 9003



Terracotta



Clay



Black

**Kuark**

Polyethylene

Armchair colours



White  
RAL 9010



Mustard



Terracotta



Bordeaux



Light blue



Lava  
PANTONE 405 C

**Kensho**

Painted steel

Top and base colours



White  
RAL 9010



Dove-colour  
RAL 1019



Yellow  
RAL 1004



Orange  
RAL 2010



Lava  
PANTONE 405 C

**Kapio**

Painted steel

Top and base colours



White  
RAL 9010



Dove-colour  
RAL 1019



Yellow  
RAL 1004



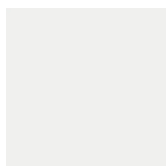
Lava  
PANTONE 405 C



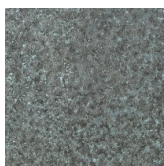
# Finishes

## Kyu HPL

Top colours



White  
RAL 9003



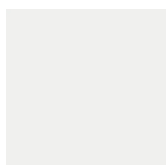
Copper green



Black  
RAL 9005

## Kyu Painted steel

Rod frame colours



White  
RAL 9003



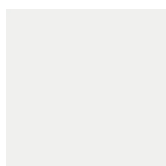
Green  
PANTONE 447 U



Black  
RAL 9005

## Kairos Laminate

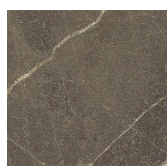
Table top



White  
RAL 9003



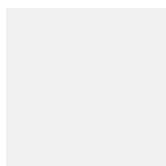
Brick red  
NCS 3560-Y70R



Patagonia  
Solo per piano  
120×120

## Kairos Painted steel

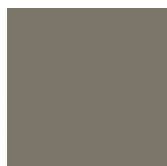
4-leg base



White  
RAL 9003



Brick red  
NCS 3560-Y70R



Lava  
PANTONE 405 C

## Kobi

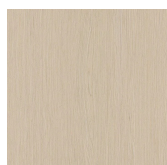
Table top



Green



Lava



Light oak

# Finishes

**Kobi**

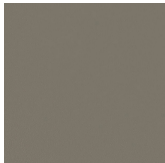
Painted steel

---

Frame colours



Green  
PANTONE 447 U



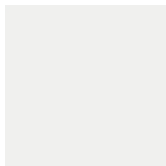
Lava  
PANTONE 405 C

**Key Move**

Painted steel

---

Side table colours



White  
RAL 9003



Dove-colour  
RAL 1019



Black  
RAL 9005